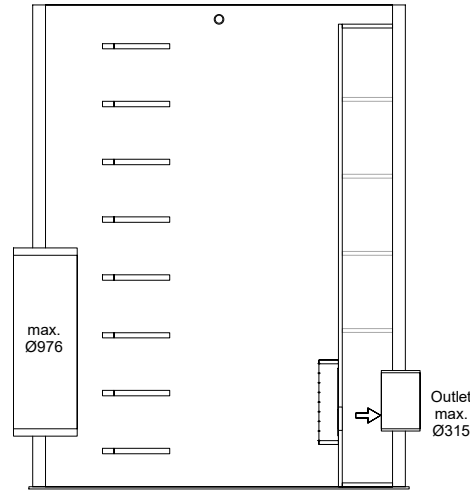
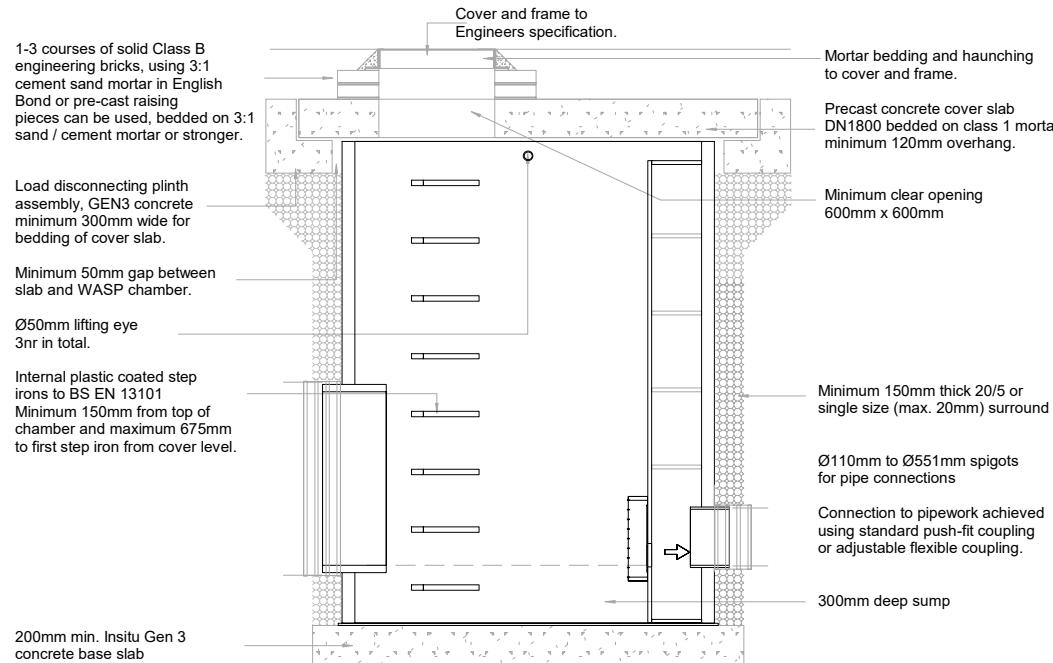
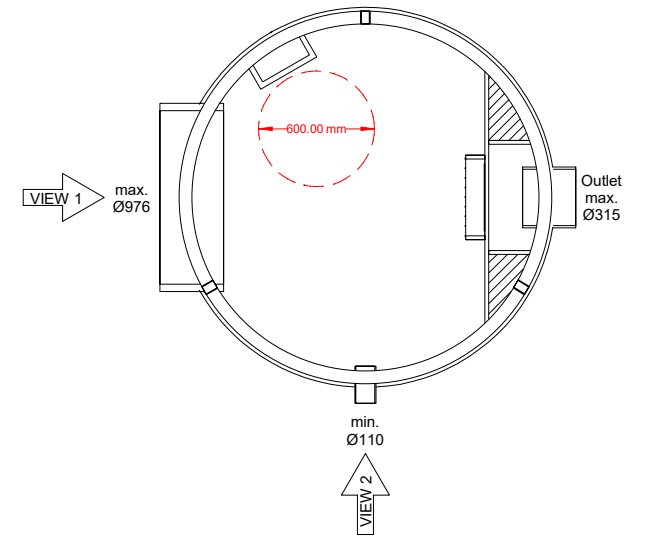


VIEW 1 (chamber shown WASP06404WW)



VIEW 2 (chamber shown WASP06404WW)



INSTALLATION DETAIL  
 WASP06400WW Series  
 Prefabricated Orifice Flow Control  
 Chamber with Internal Weir Wall  
 Ø1800 up to 3.0m deep chamber  
 By SEL Environmental Tel: 01254 589987



Tel: 01254 589987

- WASP06401WW - Up to 1000mm deep
- WASP06402WW - Up to 1500mm deep
- WASP06403WW - Up to 2000mm deep
- WASP06404WW - Up to 2500mm deep
- WASP06405WW - Up to 3000mm deep