



WASP
Water Ancillary Specialist Products



PREFABRICATED VORTEX FLOW CONTROL CHAMBERS

Issue v1: June 2021

For more information please contact 01254 589987 or email sales@selenvironmental.com

Disclaimer

This product specification is neither giving nor implying warranty for the use of this information for design and installation, as these are beyond our control. The data provided is typical and based upon the mean values and we reserve the right to change the specifications without prior notice.

VORTEX CHAMBERS



WASP
Water Ancillary Specialist Products

WASP vortex flow control chambers are bespoke prefabricated, watertight, structured wall chambers, manufactured to suit project-specific requirements. They are supplied with a pre-fitted vortex flow control device, a self-activating device that provides improved hydraulic performance over conventional flow controls, such as orifice plates and throttle pipes. Vortex flow controls from various manufacturers can be incorporated.

Each chamber has a sump, sized to suit the requirements of the vortex unit, which helps to separate and retain silt and other particles from stormwater run-off entering the chamber. The bulkhead on which the vortex unit is mounted can also be fabricated to include an overflow, the height of which can be set to suit project-specific requirements.

The Health and Safety benefits of using WASP chambers become apparent during handling and installation, due to their strong, lightweight construction and integral lifting points. In addition, off-site fabrication ensures uncompromised, high quality products being delivered to site ready-to-install, reducing installation time and costs.

Key benefits

- Arrives to site, ready to install
- Vortex device pre-installed
- Watertight, structured wall construction
- Strong, lightweight, One-piece installation
- Made from High-density Polyethylene (HDPE)
- Integral lifting points as standard
- Depths to suit project-specific requirements
- Wide range of diameters available
- Multiple inlet and outlet options
- Ø1200+ Fitted step rungs to BS EN 13101
- Supplied with integral spigot connections
- Easy access for collection and disposal of silt

Chemical resistance

- HDPE is naturally resistant to most chemicals associated with stormwater drainage systems.

Diameter

- 1200mm to 2400mm (ID)

Depth

- Up to 3000mm deep

Sump depth

- 300mm deep as a minimum standard.

Inlets/outlets diameter

- 110mm to 976mm (OD)

Colour

- Black

Accessories & Options

- Range of flexible couplings for simple connection to ongoing pipe networks available
- Flap valves
- Built in weir overflow available

Compliance with:

- New Design & Construction Guidance - Section C7.1.1 Sediment Management
- Sewers for Adoption (SfA8) 8th edition
- Components comply with BS EN 13598-2:2020
- Manufactured to Adoptable and Non-Adoptable applications
- Building Regulations - Part H1



For more information please contact 01254 589987 or email sales@selenvironmental.com

Disclaimer

This product specification is neither giving nor implying warranty for the use of this information for design and installation, as these are beyond our control. The data provided is typical and based upon the mean values and we reserve the right to change the specifications without prior notice.

VORTEX CHAMBERS



WASP
Water Ancillary Specialist Products

CODE	DESCRIPTION
WASP06251VX	1200mm Ø Chamber; 1.0m deep; 4 x spigots; max. 500mm Ø
WASP06252VX	1200mm Ø Chamber; 1.5m deep; 4 x spigots; max. 500mm Ø
WASP06253VX	1200mm Ø Chamber; 2.0m deep; 4 x spigots; max. 500mm Ø
WASP06254VX	1200mm Ø Chamber; 2.5m deep; 4 x spigots; max. 500mm Ø
WASP06255VX	1200mm Ø Chamber; 3.0m deep; 4 x spigots; max. 500mm Ø
WASP06301VX	1350mm Ø Chamber; 1.0m deep; 4 x spigots; max. 600mm Ø
WASP06302VX	1350mm Ø Chamber; 1.5m deep; 4 x spigots; max. 600mm Ø
WASP06303VX	1350mm Ø Chamber; 2.0m deep; 4 x spigots; max. 600mm Ø
WASP06304VX	1350mm Ø Chamber; 2.5m deep; 4 x spigots; max. 600mm Ø
WASP06305VX	1350mm Ø Chamber; 3.0m deep; 4 x spigots; max. 600mm Ø
WASP06351VX	1500mm Ø Chamber; 1.0m deep; 4 x spigots; max. 600mm Ø
WASP06352VX	1500mm Ø Chamber; 1.5m deep; 4 x spigots; max. 600mm Ø
WASP06353VX	1500mm Ø Chamber; 2.0m deep; 4 x spigots; max. 600mm Ø
WASP06354VX	1500mm Ø Chamber; 2.5m deep; 4 x spigots; max. 600mm Ø
WASP06355VX	1500mm Ø Chamber; 3.0m deep; 4 x spigots; max. 600mm Ø
WASP06401VX	1800mm Ø Chamber; 1.0m deep; 4 x spigots; max. 900mm Ø
WASP06402VX	1800mm Ø Chamber; 1.5m deep; 4 x spigots; max. 900mm Ø
WASP06403VX	1800mm Ø Chamber; 2.0m deep; 4 x spigots; max. 900mm Ø
WASP06404VX	1800mm Ø Chamber; 2.5m deep; 4 x spigots; max. 900mm Ø
WASP06405VX	1800mm Ø Chamber; 3.0m deep; 4 x spigots; max. 900mm Ø

For more information please contact 01254 589987 or email sales@selenvironmental.com

Disclaimer

This product specification is neither giving nor implying warranty for the use of this information for design and installation, as these are beyond our control. The data provided is typical and based upon the mean values and we reserve the right to change the specifications without prior notice.

VORTEX CHAMBERS



WASP
Water Ancillary Specialist Products

Accessories

Flexible Couplings

We can supply flexible couplings for forming joints between WASP chamber spigots and inlet / outlet drainage pipes. A range of diameters and adapters are available to suit most combinations. Where the difference in diameter exceeds 12mm a bush should be used.

The stainless steel and rubber construction allows for greater flexibility and the ability to withstand an internal water pressure of 2.5 bar.

Couplings comply with the requirements of Water Industry Specification WIS 4-41-01 "Specification for flexible couplings for gravity sewerage and drainage pipes".



There are no spot-welds on the shear band having been replaced with fasteners using TOX[®] technology that enhances the corrosion resistance of the couplings. Couplings are secured in place using the screw 'jubilee' type fastener.

Flap Valves

Where your surface water drainage discharges into a watercourse or combined sewer you may require a flap valve to prevent backflow into your drainage collection system.

If required, flap valves can be installed within your catchpit chamber during their manufacture in our factory. A range of diameters are available with a hinged design that ensures full face sealing when closed.



For more information please contact 01254 589987 or email sales@selenvironmental.com

Disclaimer

This product specification is neither giving nor implying warranty for the use of this information for design and installation, as these are beyond our control. The data provided is typical and based upon the mean values and we reserve the right to change the specifications without prior notice.

VORTEX CHAMBERS

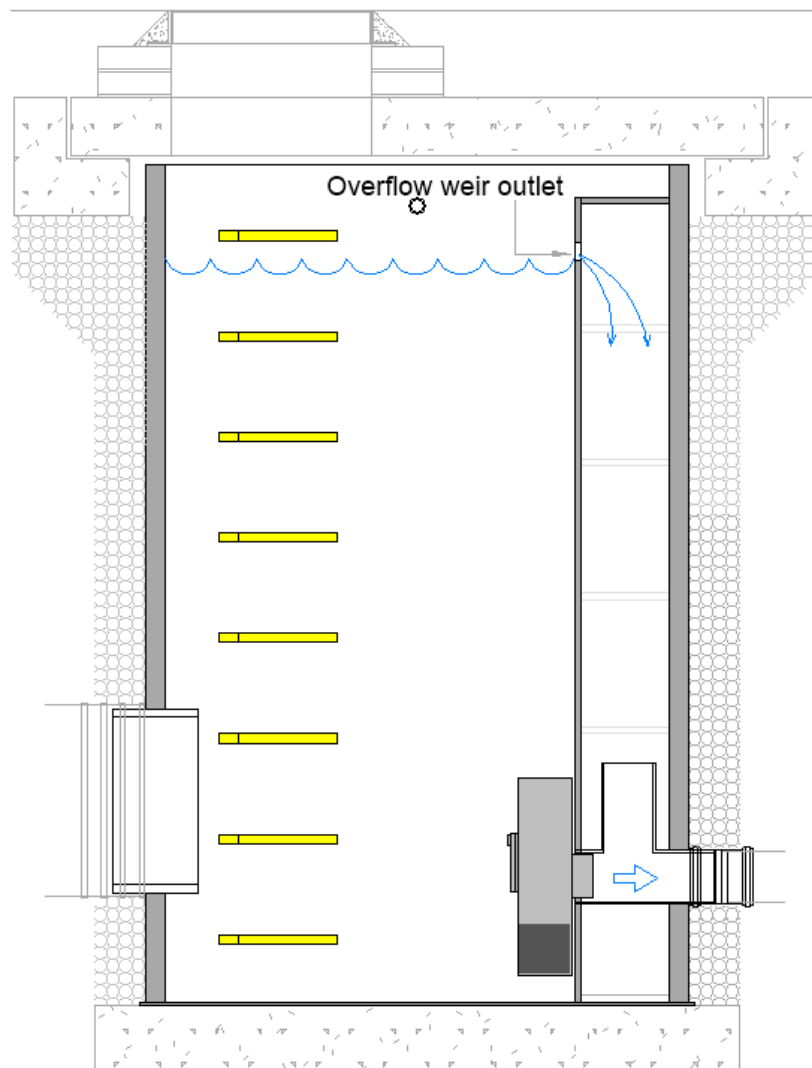


WASP
Water Ancillary Specialist Products

Overflow Facility

The WASP VX chamber range offers the flexibility to include a fixed height weir overflow. The overflow weir is installed within the bulkhead on which the vortex device is mounted.

The weir can be set to a specific height relative to the outlet pipe invert level.



For more information please contact 01254 589987 or email sales@selenvironmental.com

Disclaimer

This product specification is neither giving nor implying warranty for the use of this information for design and installation, as these are beyond our control. The data provided is typical and based upon the mean values and we reserve the right to change the specifications without prior notice.

VORTEX CHAMBERS



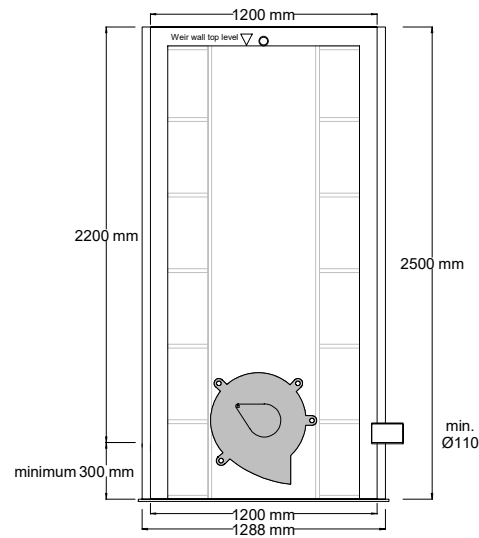
WASP
Water Ancillary Specialist Products

Technical Details

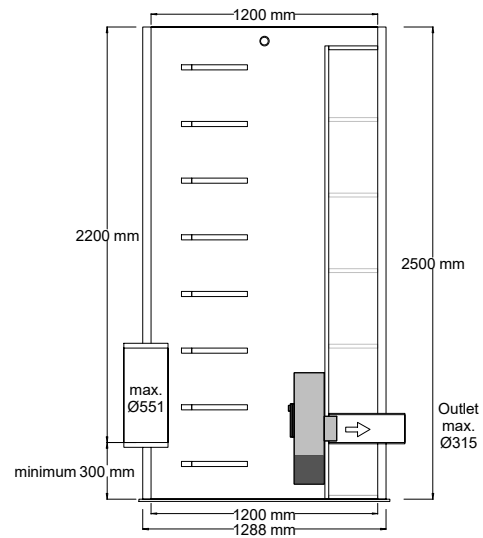
For more information please contact 01254 589987 or email sales@selenvironmental.com

Disclaimer

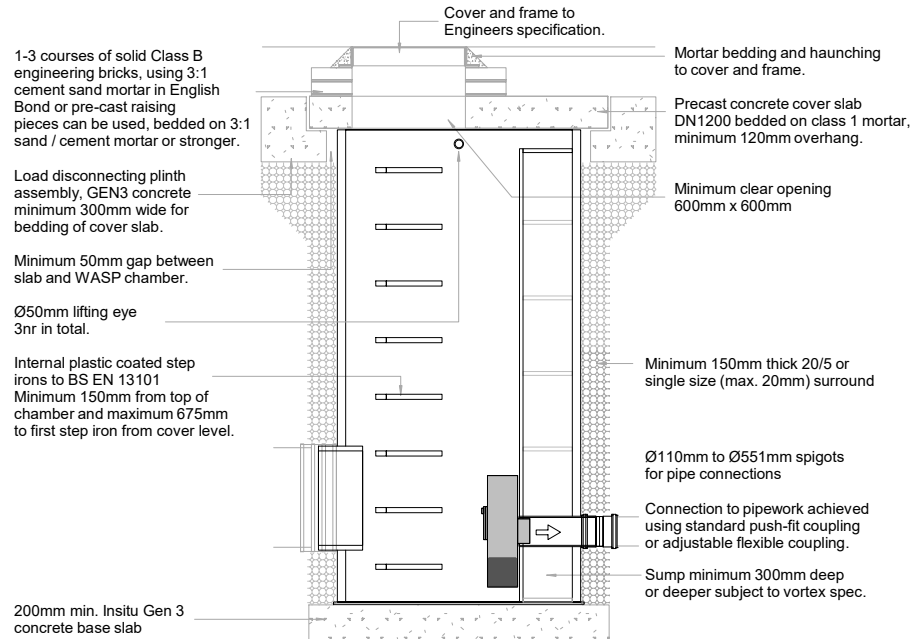
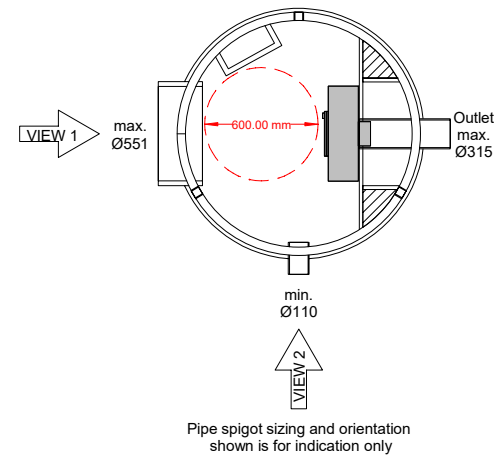
This product specification is neither giving nor implying warranty for the use of this information for design and installation, as these are beyond our control. The data provided is typical and based upon the mean values and we reserve the right to change the specifications without prior notice.



VIEW 1 (chamber shown WASP06254VX)



VIEW 2 (chamber shown WASP06254VX)

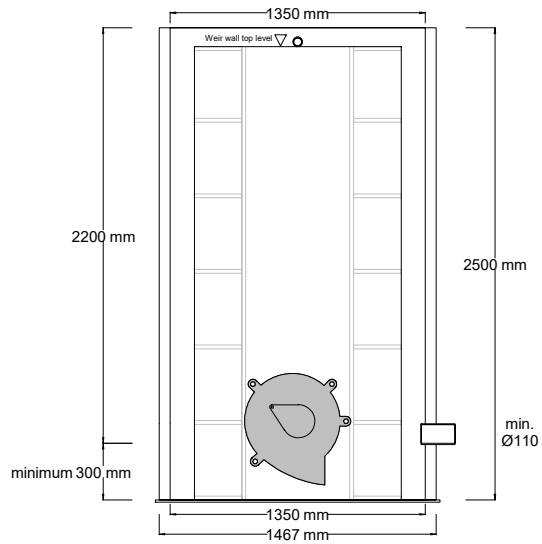


INSTALLATION DETAIL
WASP06250VX Series
Prefabricated Vortex
Flow Control Chamber
Ø1200 up to 2.5m deep chamber
By SEL Environmental Tel: 01254 589987

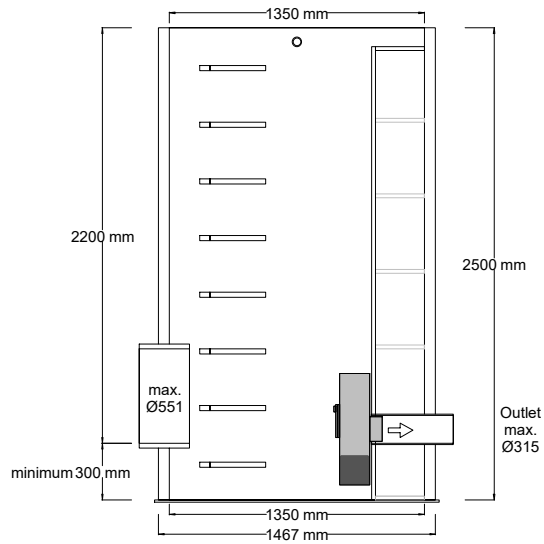


Tel: 01254 589987

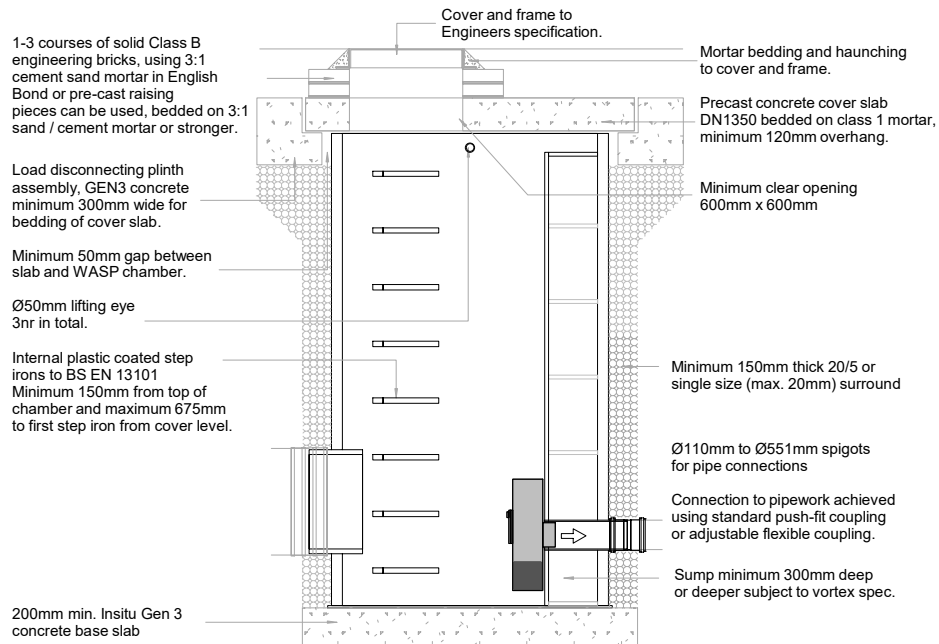
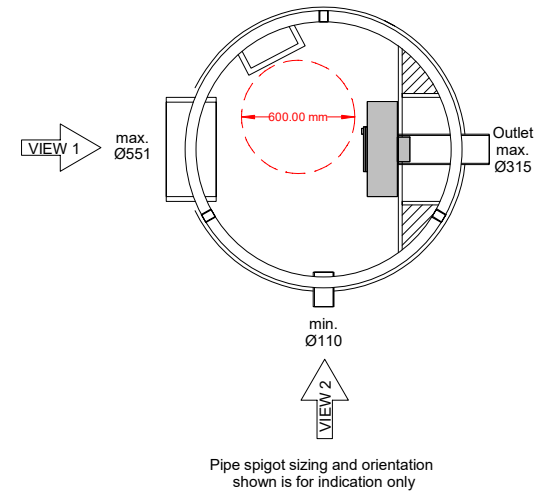
WASP06251VX - Up to 1000mm deep
WASP06252VX - Up to 1500mm deep
WASP06253VX - Up to 2000mm deep
WASP06254VX - Up to 2500mm deep
WASP06255VX - Up to 3000mm deep



VIEW 1 (chamber shown WASP06304VX)



VIEW 2 (chamber shown WASP06304VX)

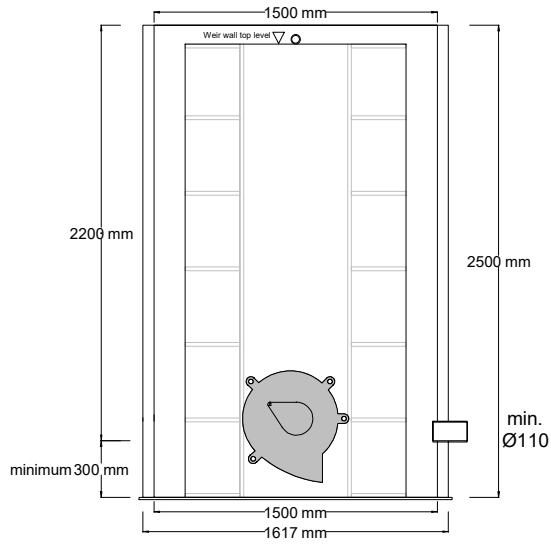


INSTALLATION DETAIL
 WASP06300 Series
 Prefabricated Vortex
 Flow Control Chamber
 Ø1350 up to 3.0m deep chamber
 By SEL Environmental Tel: 01254 589987

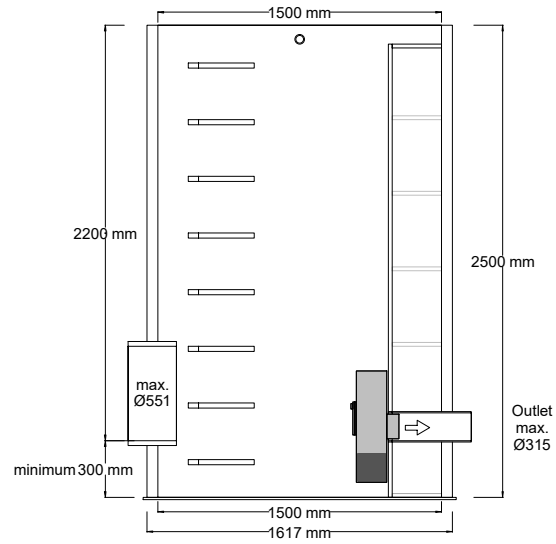


Tel: 01254 589987

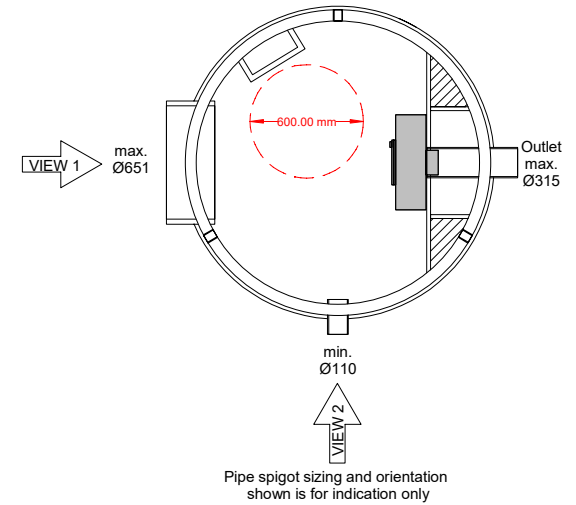
WASP06301VX - Up to 1000mm deep
 WASP06302VX - Up to 1500mm deep
 WASP06303VX - Up to 2000mm deep
 WASP06304VX - Up to 2500mm deep
 WASP06305VX - Up to 3000mm deep



VIEW 1 (chamber shown WASP06354VX)



VIEW 2 (chamber shown WASP06354VX)



1-3 courses of solid Class B engineering bricks, using 3:1 cement sand mortar in English Bond or pre-cast raising pieces can be used, bedded on 3:1 sand / cement mortar or stronger.

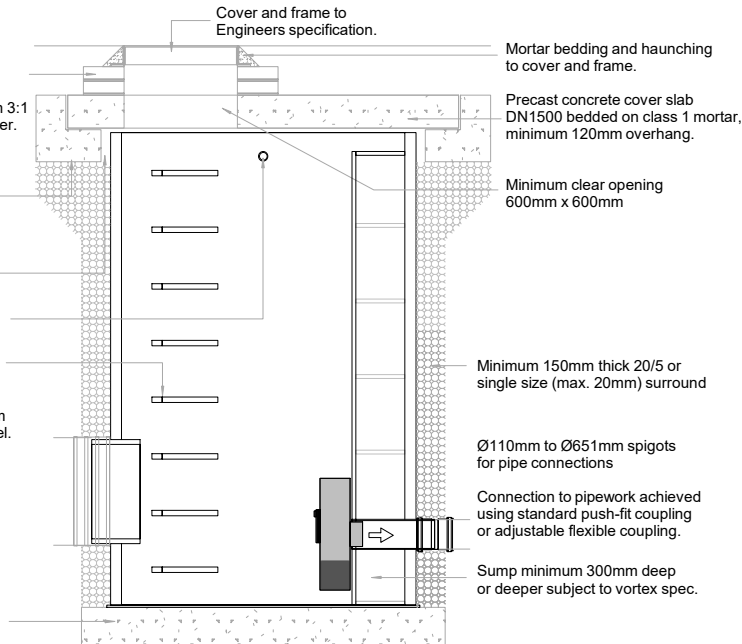
Load disconnecting plinth assembly, GEN3 concrete minimum 300mm wide for bedding of cover slab.

Minimum 50mm gap between slab and WASP chamber.

Ø50mm lifting eye 3nr in total.

Internal plastic coated step irons to BS EN 13101 Minimum 150mm from top of chamber and maximum 675mm to first step iron from cover level.

200mm min. Insitu Gen 3 concrete base slab

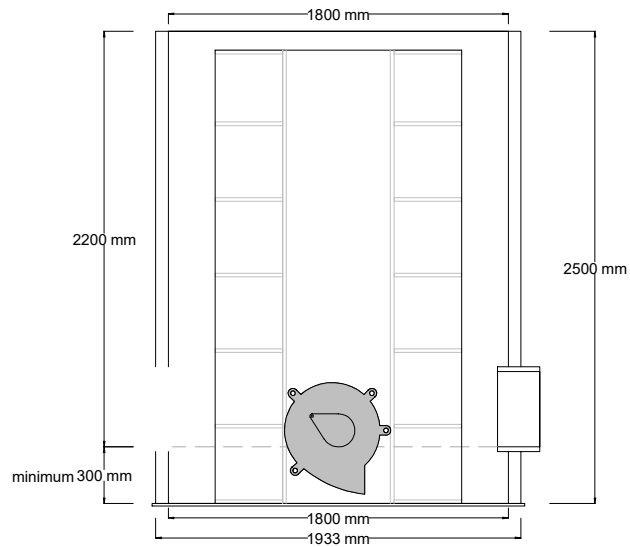


INSTALLATION DETAIL
 WASP06350 Series
 Prefabricated Vortex
 Flow Control Chamber
 Ø1500 up to 3.0m deep chamber
 By SEL Environmental Tel: 01254 589987

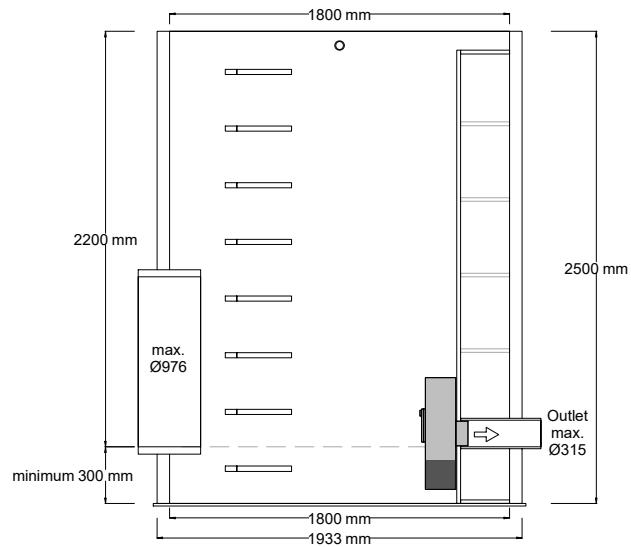


Tel: 01254 589987

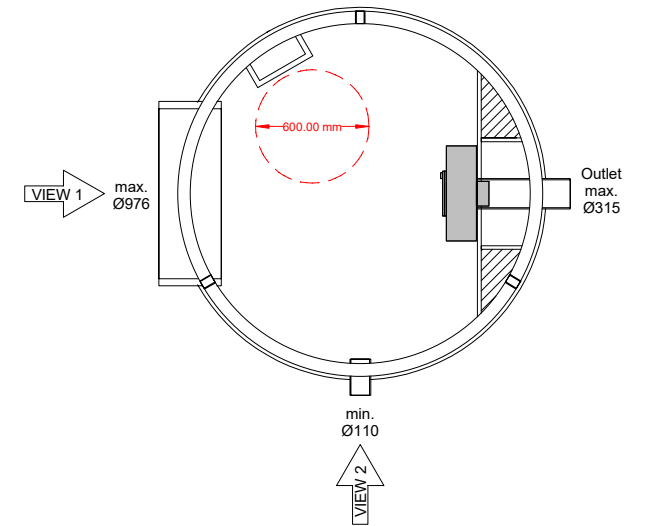
WASP06351VX - Up to 1000mm deep
 WASP06352VX - Up to 1500mm deep
 WASP06353VX - Up to 2000mm deep
 WASP06354VX - Up to 2500mm deep
 WASP06355VX - Up to 3000mm deep



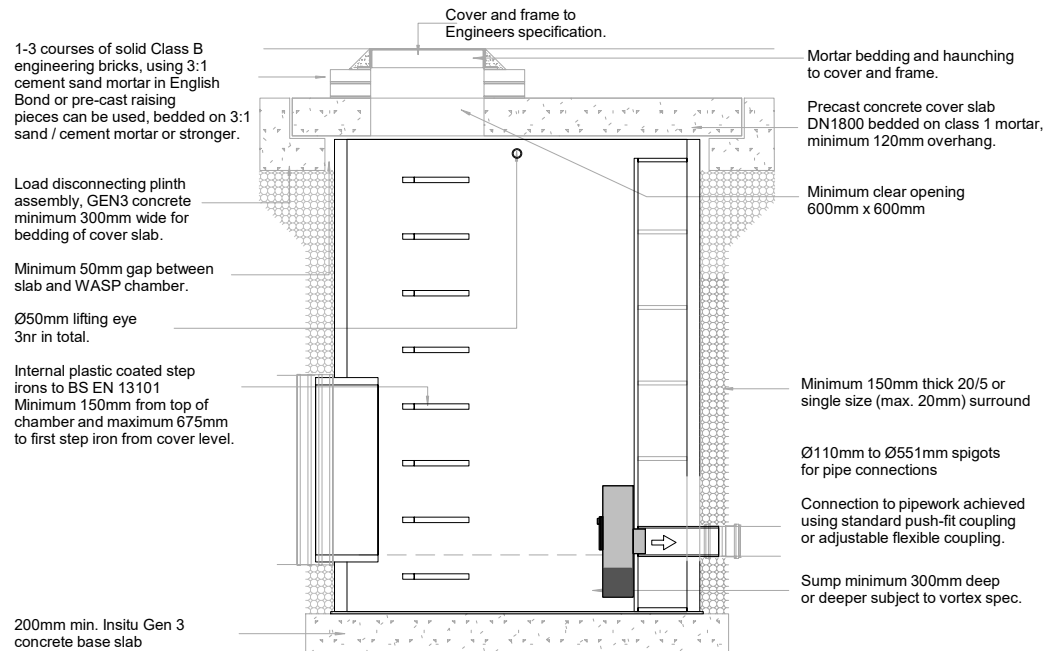
VIEW 1 (chamber shown WASP06404VX)



VIEW 2 (chamber shown WASP06404VX)



Pipe spigot sizing and orientation shown is for indication only



INSTALLATION DETAIL
WASP06400 Series
Prefabricated Vortex
Flow Control Chamber
Ø1800 up to 3.0m deep chamber
By SEL Environmental Tel: 01254 589987



Tel: 01254 589987

WASP06401VX - Up to 1000mm deep
WASP06402VX - Up to 1500mm deep
WASP06403VX - Up to 2000mm deep
WASP06404VX - Up to 2500mm deep
WASP06405VX - Up to 3000mm deep

VORTEX CHAMBERS



WASP
Water Ancillary Specialist Products

End of Document

For more information please contact 01254 589987 or email sales@selenvironmental.com

Disclaimer

This product specification is neither giving nor implying warranty for the use of this information for design and installation, as these are beyond our control. The data provided is typical and based upon the mean values and we reserve the right to change the specifications without prior notice.