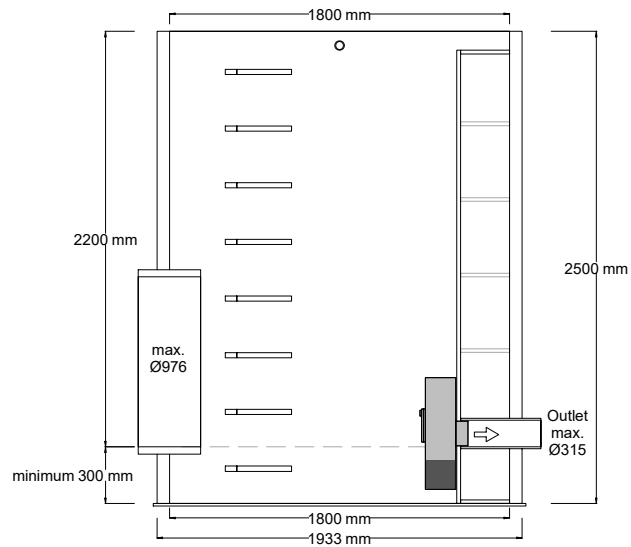
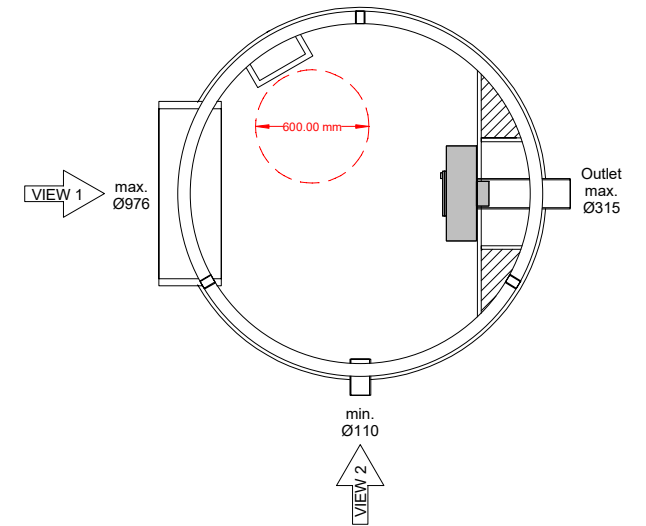


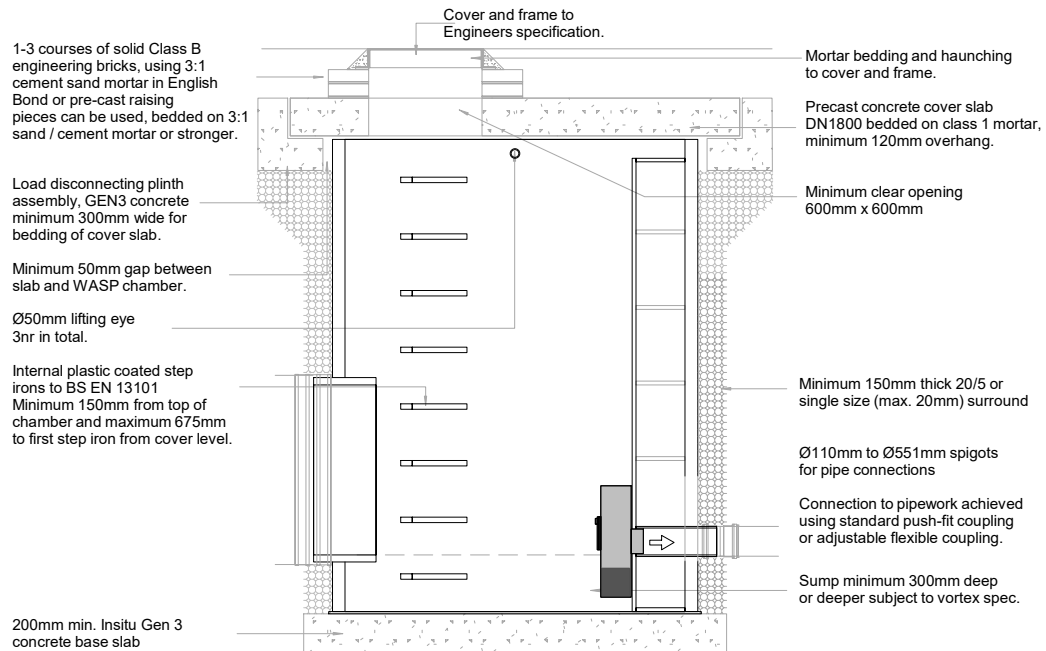
VIEW 1 (chamber shown WASP06404VX)



VIEW 2 (chamber shown WASP06404VX)



Pipe spigot sizing and orientation shown is for indication only



INSTALLATION DETAIL  
WASP06400 Series  
Prefabricated Vortex  
Flow Control Chamber  
Ø1800 up to 3.0m deep chamber  
By SEL Environmental Tel: 01254 589987



Tel: 01254 589987

WASP06401VX - Up to 1000mm deep  
WASP06402VX - Up to 1500mm deep  
WASP06403VX - Up to 2000mm deep  
WASP06404VX - Up to 2500mm deep  
WASP06405VX - Up to 3000mm deep