



PREFABRICATED 04 STANDARD CATCHPIT CHAMBERS

WIP:09/06/2020

For more information please contact 01254 589987 or email sales@selenvironmental.com

Disclaimer

This product specification is neither giving nor implying warranty for the use of this information for design and installation, as these are beyond our control. The data provided is typical and based upon the mean values and we reserve the right to change the specifications without prior notice.



WASP04301

315mm Ø Chamber; 3nr 110mm Ø Inlets; 1nr 110mm Ø Outlet

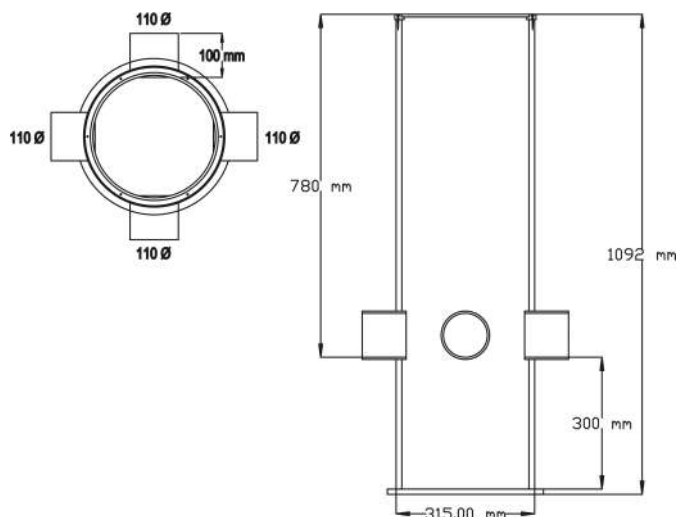
Description

The WASP04301 315mm diameter (OD) Catchpit Chamber has an overall nominal height of 1092mm, which can be easily reduced on site to suit required invert levels. Each chamber is supplied with 3 no. 110mmØ (OD) inlet pipe spigots and 1 no. 110mmØ (OD) outlet pipe spigot to suit standard PVC-U push-fit pipework. The inlet spigots are supplied with capped ends which are removed as required prior to pipe connection. Each chamber is supplied with a 300mm deep sump to facilitate the collection and removal of silt and debris and a temporary cover to prevent the ingress of debris during the construction phase.



SPECIFICATION

Diameter (mm)	315
Depth (mm)	1092
Sump Depth (mm)	300
Nr Inlet Spigots	3
Nr Outlet Spigots	1
Spigot OD (mm)	110
Unit Weight (kg)	15
Core Material	HDPE



TRAPS SILT AND DEBRIS

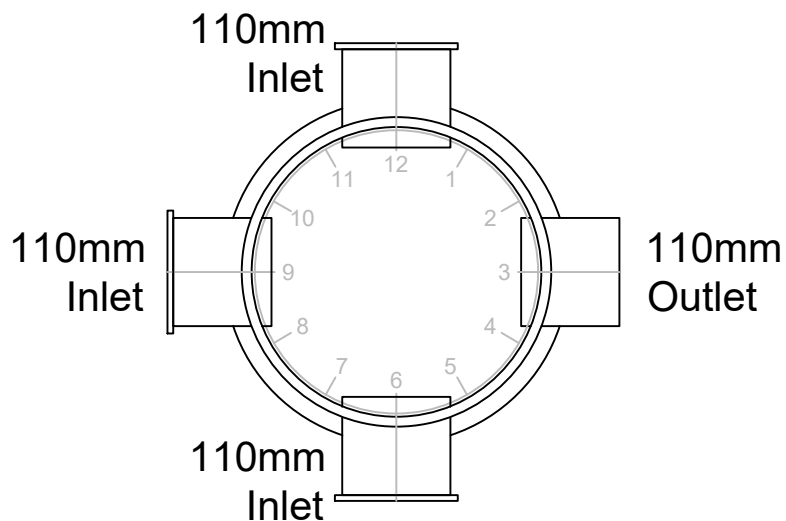
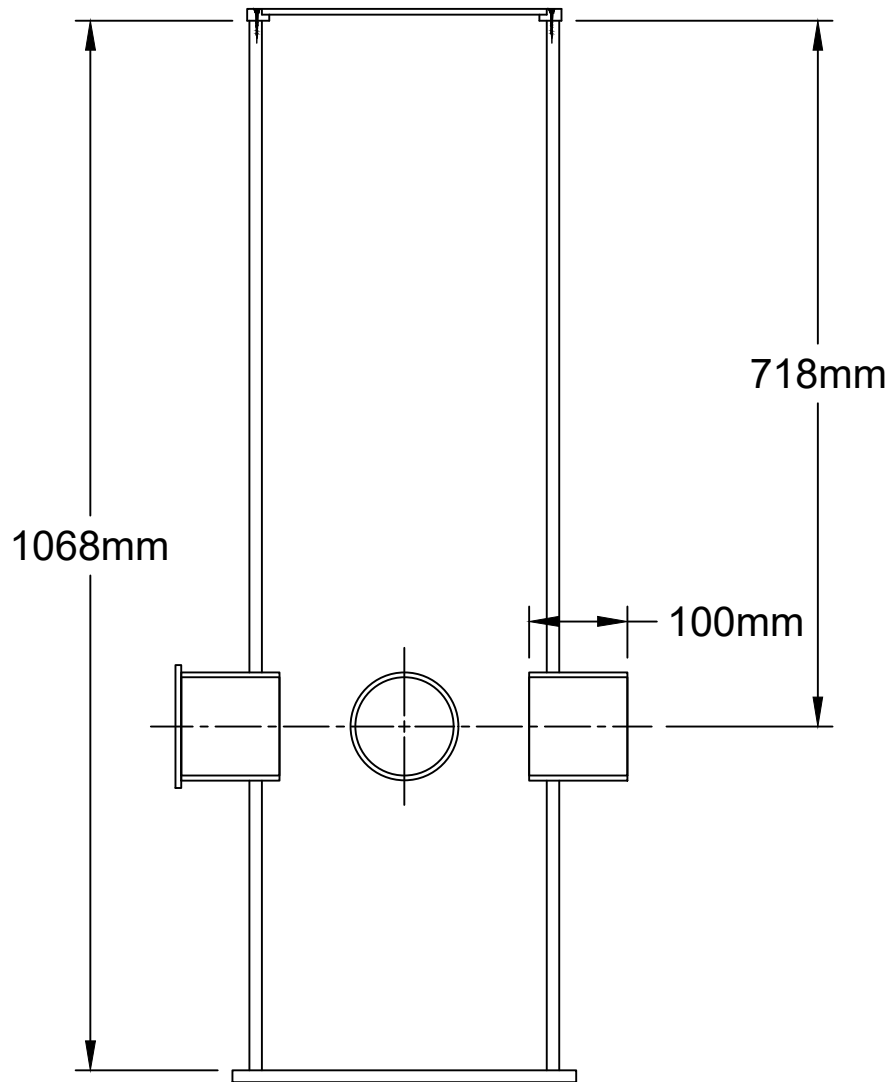
SUITS SHALLOW CONSTRUCTION

UNIVERSAL FOR ANY SUDS

For more information please contact 01254 589987 or email sales@selenvironmental.com

Disclaimer

This product specification is neither giving nor implying warranty for the use of this information for design and installation, as these are beyond our control. The data provided is typical and based upon the mean values and we reserve the right to change the specifications without prior notice.



Sel Environmental
Real Innovation.

SEL Environmental Ltd
Canal House
Bonsall Street
Blackburn
BB2 4DD

Tel: 01254 589987
www.selenv.co.uk

Product Code: WASP04301

Description: 315mmØ Chamber; 3nr 110mmØ Inlets,
1nr 110mmØ Outlet

Client: n/a

Status: For Fabrication

--	14/08/20	Initial issue	JG	BS
Rev	Date	Description	By	Chk
Scale	1:10	Paper Size	A4	
Drawing Number		WASP		
Client Ref: n/a				



WASP04310

315mm Ø Chamber; 3nr 110mm Ø Inlets, 1nr 160mm Ø Outlet

Description

The WASP04310 315mm diameter (OD) Catchpit Chamber has an overall nominal height of 1092mm, which can be easily reduced on site to suit required invert levels. Each chamber is supplied with 3 no. 110mmØ (OD) inlet pipe spigots and 1 no. 160mmØ (OD) outlet pipe spigot to suit standard PVC-U push-fit pipework. The inlet spigots are supplied with capped ends which are removed as required prior to pipe connection. Each chamber is supplied with a 300mm deep sump to facilitate the collection and removal of silt and debris and a temporary cover to prevent the ingress of debris during the construction phase.



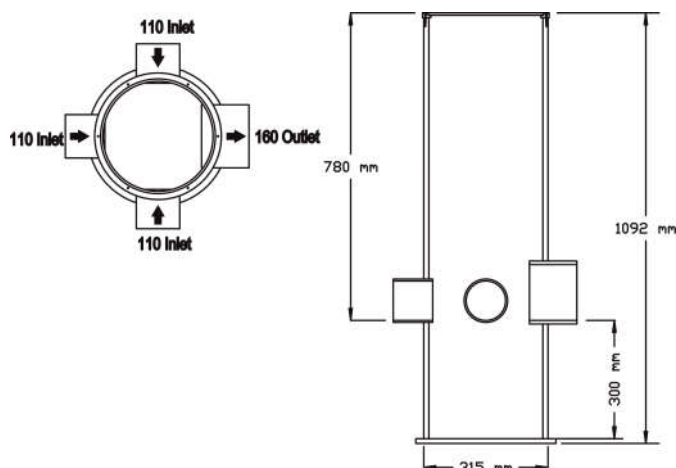
SPECIFICATION

Diameter (mm)	315
Depth (mm)	1092
Sump Depth (mm)	300
Nr Inlet Spigots	3
Nr Outlet Spigots	1
Spigot OD (mm)	110 to 160
Unit Weight (kg)	15
Core Material	HDPE

UNIVERSAL FOR ANY SUDS

TRAPS SILT AND DEBRIS

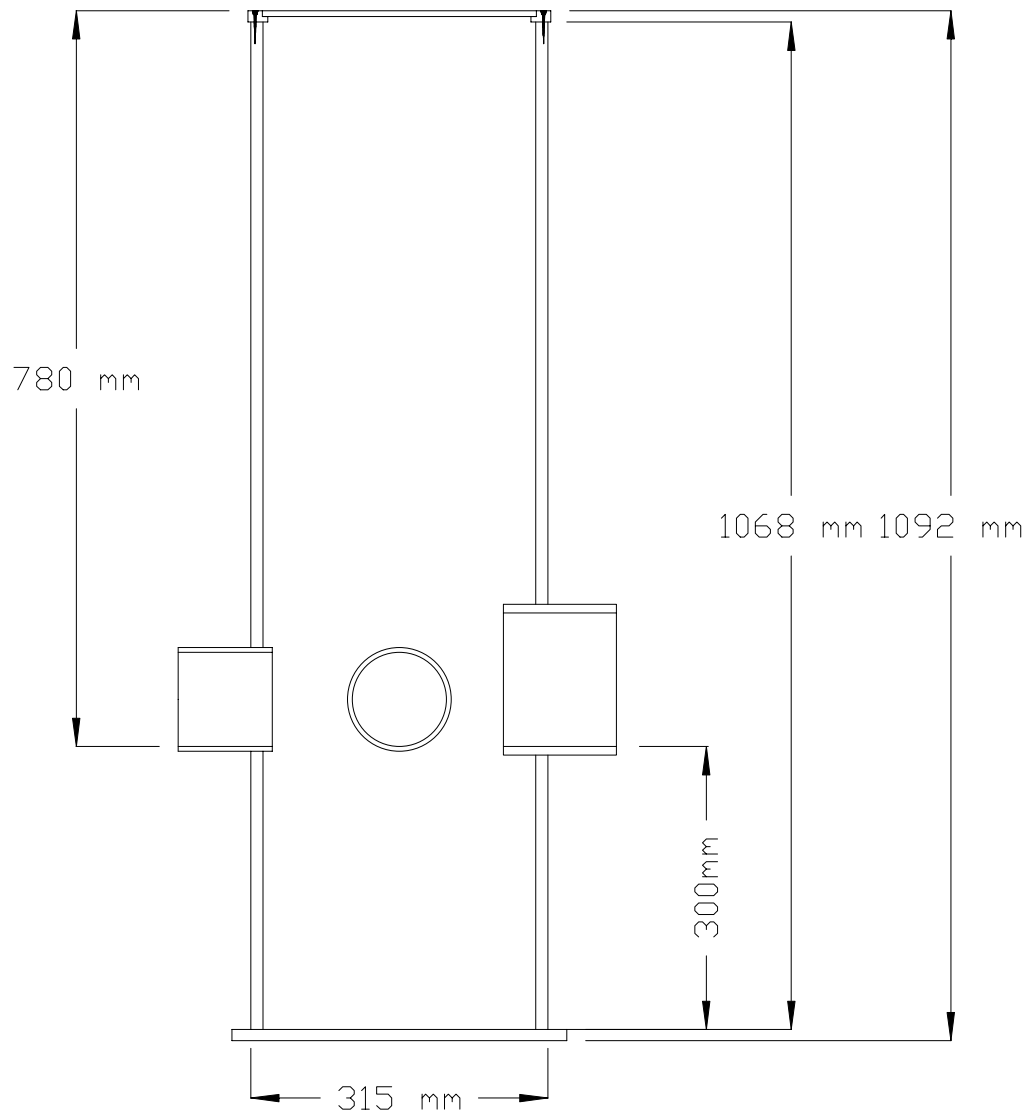
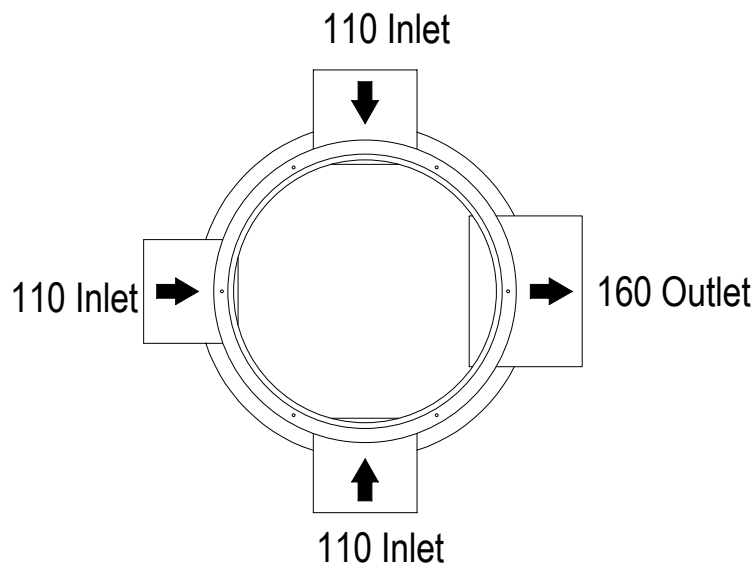
SUITS SHALLOW CONSTRUCTION



For more information please contact 01254 589987 or email sales@selenvironmental.com

Disclaimer

This product specification is neither giving nor implying warranty for the use of this information for design and installation, as these are beyond our control. The data provided is typical and based upon the mean values and we reserve the right to change the specifications without prior notice.



SEL Environmental Ltd

Real Innovation

SEL Environmental Ltd
Canal House
Bonsall Street
Blackburn
BB2 4DD

Tel: 01254 589987
www.selel.co.uk

Project: TBC
Drawing Title: WASP04310
Client: TBC
Status: For Comment

Rev	Date	Description	By	Chk
Scale			Paper Size	
Drawing Number				



WASP04320

315mm Ø Filter Chamber; 3 x 110mm Ø Inlets; 1 x 110mm Ø Outlet

Description

The WASP04320 500mm diameter (ID) Catchpit Chamber is prefabricated to suit individual site requirements up to a maximum height of 1000mm (including sump). Pipe connection spigots ranging from 110mmØ to 225mmØ (OD) are positioned to suit the manhole schedule and/or drainage layout and up to 4 no. pipe connections are included in the list price. A 300mm deep sump to facilitate the collection and removal of silt and debris under a regular maintenance regime is included as standard. The sump depth can be increased if required.

SPECIFICATION

Diameter (mm)	315
Depth (mm)	1092
Sump Depth (mm)	300
Nr Inlet Spigots	3
Nr Outlet Spigots	1
Spigot OD (mm)	110
Unit Weight (kg)	0
Core Material	HDPE

UNIVERSAL FOR ANY SUDS

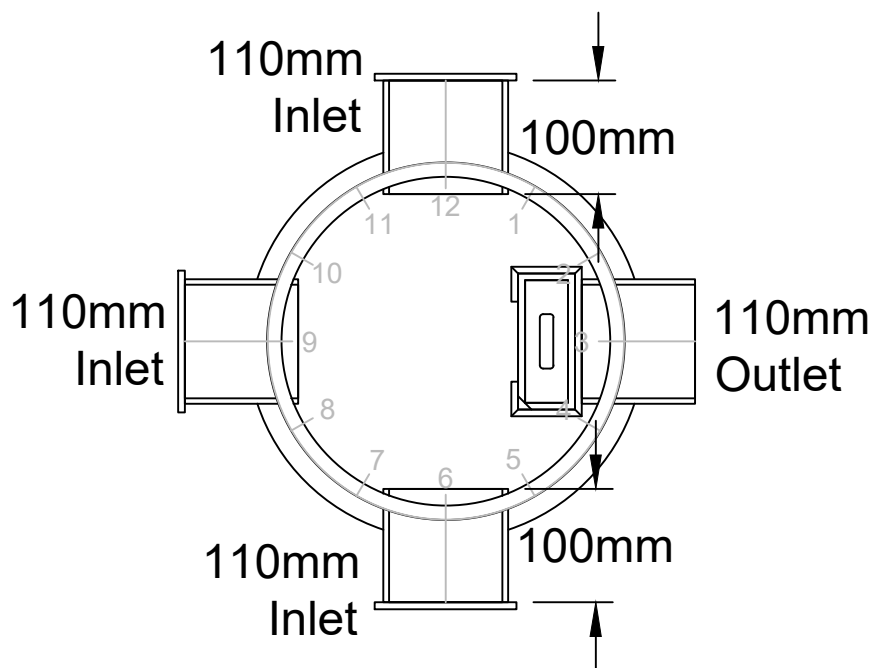
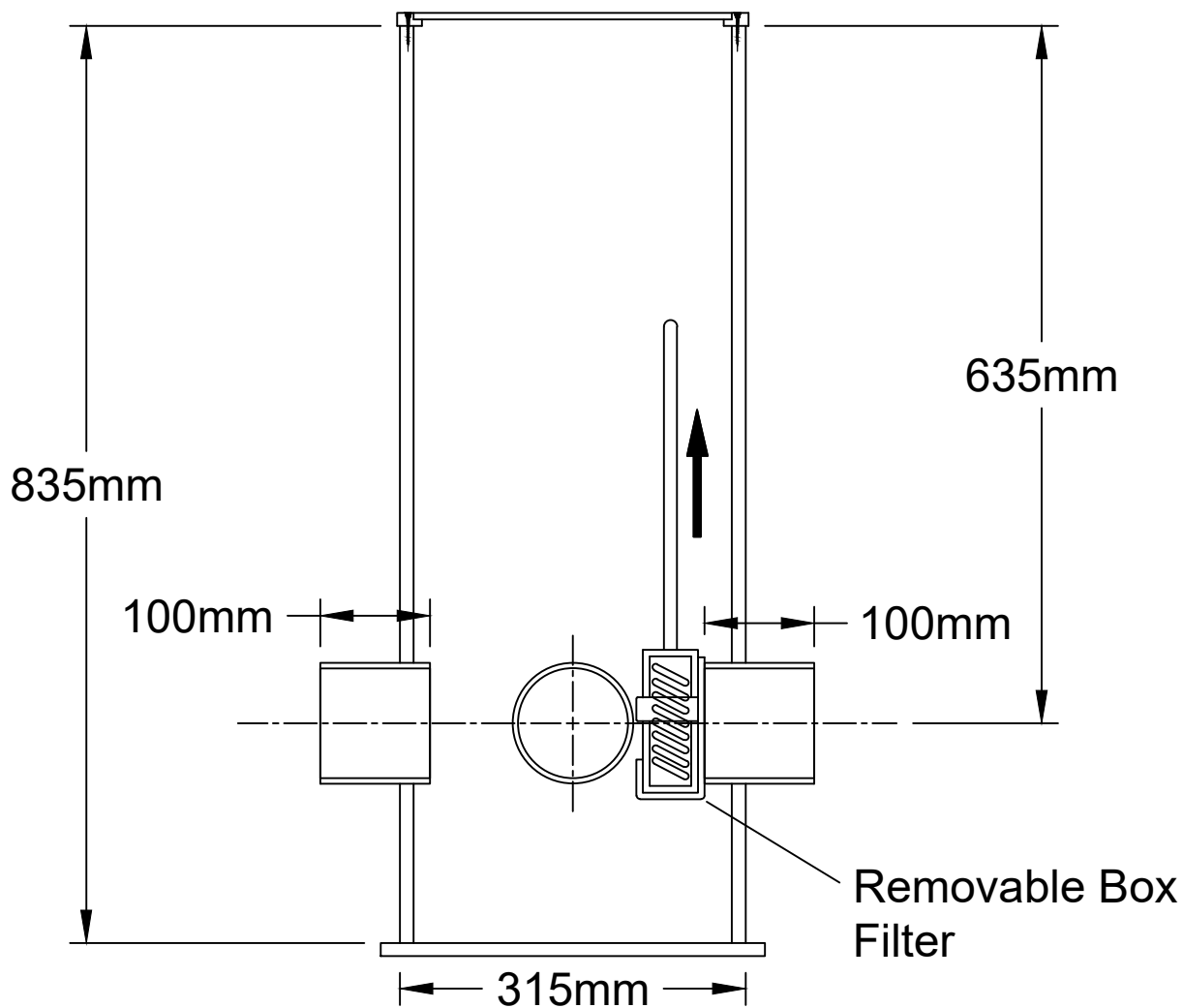
MULTIPLE INLET / OUTLET OPTIONS

TRAPS SILT AND DEBRIS

For more information please contact 01254 589987 or email sales@selenvironmental.com

Disclaimer

This product specification is neither giving nor implying warranty for the use of this information for design and installation, as these are beyond our control. The data provided is typical and based upon the mean values and we reserve the right to change the specifications without prior notice.



Sel Environmental
Real Innovation.

SEL Environmental Ltd
Canal House
Bonsall Street
Blackburn
BB2 4DD

Tel: 01254 589987
www.selenv.co.uk

Product Code: WASP04320

Description: 315mm Ø Filter Chamber; 3nr 110mm Inlets, 1nr 110mm Outlet

Client: Internal

Status: Fabrication

A	10/11/20	Initial issue	JG	BS
Rev	Date	Description	By	Chk
Scale	1:10	Paper Size	A4	
Drawing Number		220****/001		
Client Ref:				



WASP04321

315mm Ø RWP Filter Chamber; 1 x 110mm Ø Inlet; 1 x 160mm Ø Outlet

Description

The WASP04321 500mm diameter (ID) Catchpit Chamber is prefabricated to suit individual site requirements up to a maximum height of 1500mm (including sump). Pipe connection spigots ranging from 110mmØ to 225mmØ (OD) are positioned to suit the manhole schedule and/or drainage layout and up to 4 no. pipe connections are included in the list price. A 300mm deep sump to facilitate the collection and removal of silt and debris under a regular maintenance regime is included as standard. The sump depth can be increased if required.

SPECIFICATION

Diameter (mm)	315
Depth (mm)	1092
Sump Depth (mm)	300
Nr Inlet Spigots	1
Nr Outlet Spigots	1
Spigot OD (mm)	110 to 160
Unit Weight (kg)	0
Core Material	HDPE

UNIVERSAL FOR ANY SUDS

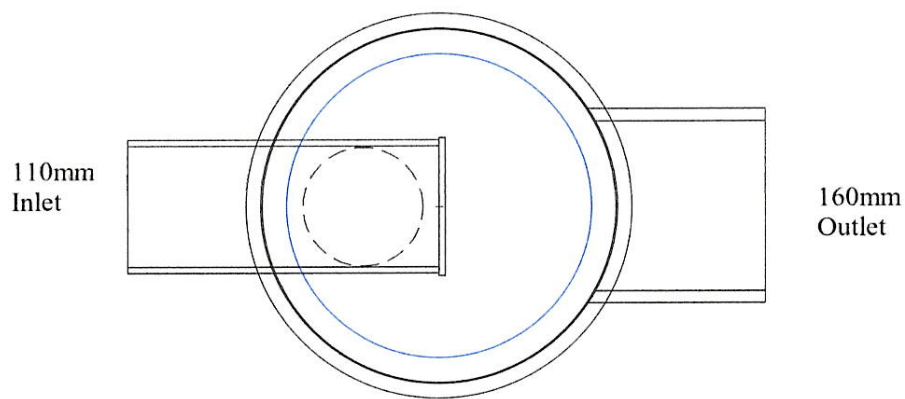
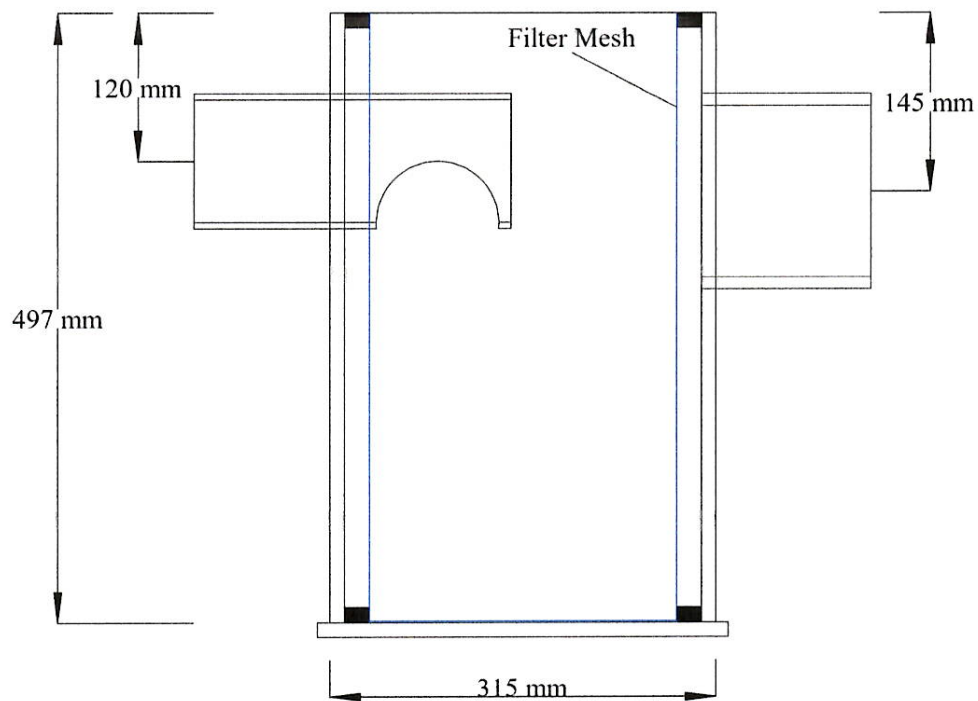
MULTIPLE INLET / OUTLET OPTIONS

TRAPS SILT AND DEBRIS

For more information please contact 01254 589987 or email sales@selenvironmental.com

Disclaimer

This product specification is neither giving nor implying warranty for the use of this information for design and installation, as these are beyond our control. The data provided is typical and based upon the mean values and we reserve the right to change the specifications without prior notice.



SEL Environmental Ltd,
Canal House
Bonsall Street
Blackburn
BB2 4DD

www.selel.co.uk Tel: 01254 589987

Contract:

Description: WASP04321

Drawing No:

Date: 13th July 2018



PREFABRICATED RAINGARDEN CHAMBER

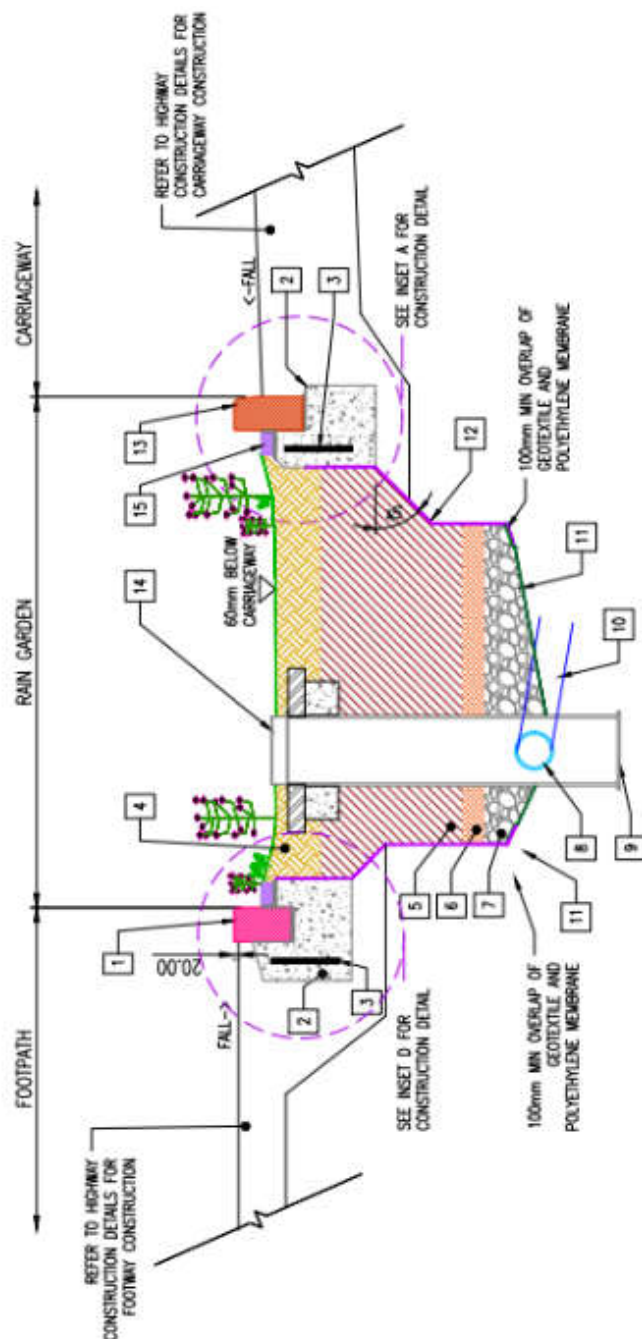
For more information please contact 01254 589987 or email sales@selenvironmental.com

Disclaimer

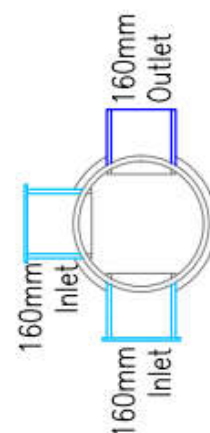
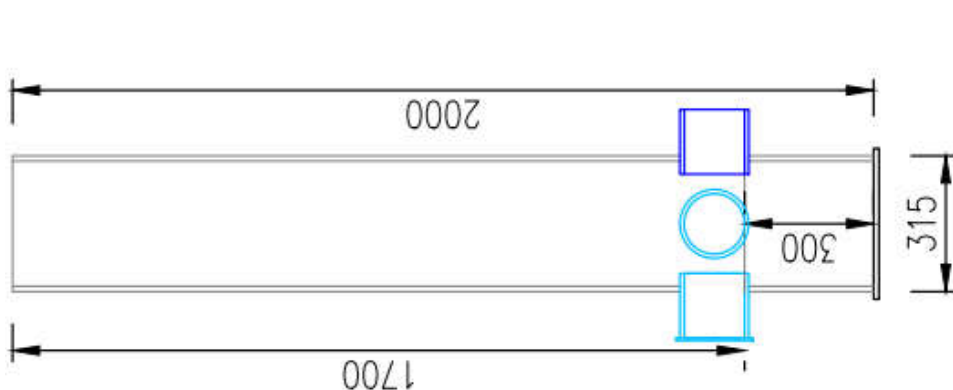
This product specification is neither giving nor implying warranty for the use of this information for design and installation, as these are beyond our control. The data provided is typical and based upon the mean values and we reserve the right to change the specifications without prior notice.



TYPICAL RAIN GARDEN SECTION
'GULLY LOCATED CENTRALLY'
Section A-A



TYPICAL RAIN GARDEN SECTION
'OFFSET GULLY CHAMBER'
Section A-A



TO CATER 150mm PIPE
MODEL REF 'SP119'