

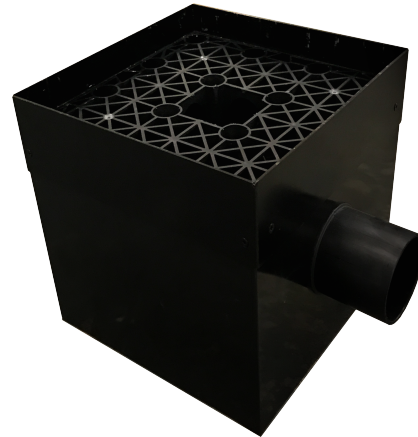
## Raintaina RWP Base Unit

RTNA05001



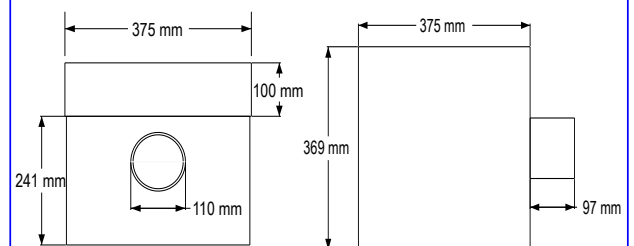
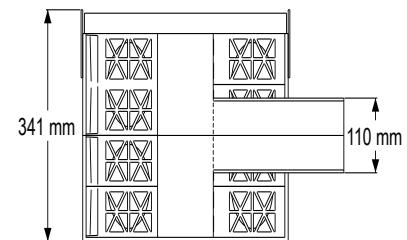
### Description

The Raintaina RWP Base Unit situated underneath the rainwater down pipe on houses uses the strength from light weight modular cells accompanied with the Raintaina RWP Filter Cover to filter rainwater into permeable paving systems. These would be located directly under the outlet of all rainwater pipes to be able to channel the water to any kind of sub base storage. It is a compact unit making it light and easy to install, it houses the filter cover and has a 110mm spigot to direct the flow of water out of the base unit. It contains a sump so that any silt or sediment sinks to the bottom preventing the clogging up of the system, this makes it easier for cleaning and maintenance.



### Packaging Details

Element	Value	Unit
Packaging unit dimension	345 x 494 x 375 (HxWxD)	mm
Packaging unit weight	TBC	kg
Number of units per pallet	TBC	nr
Pallet dimensions	1200 x 1200 x150 (LxWxD)	mm
Pallet Weight	TBC	kg



### Specification

Element	Value	Unit
Overall width	475	mm
Overall depth	341	mm
Sump Depth	105	mm
Depth to invert of inlet	231	mm
Outlet spigot O.D	110	mm
Unit weight	7	kg
Material	HDPE	

Quick and easy to install

Easy access for maintenance

Integral sediment sump